



Developed from Ce.A.S. S.r.l, Italy and Deep Excavation LLC, U.S.A.



Birth and death of elements in DeepXcav.

DeepXcav software program (Version 2011)

(ParatiePlus within Italy)

Version 1.0

Issued: 5-Nov-2010

Deep Excavation LLC

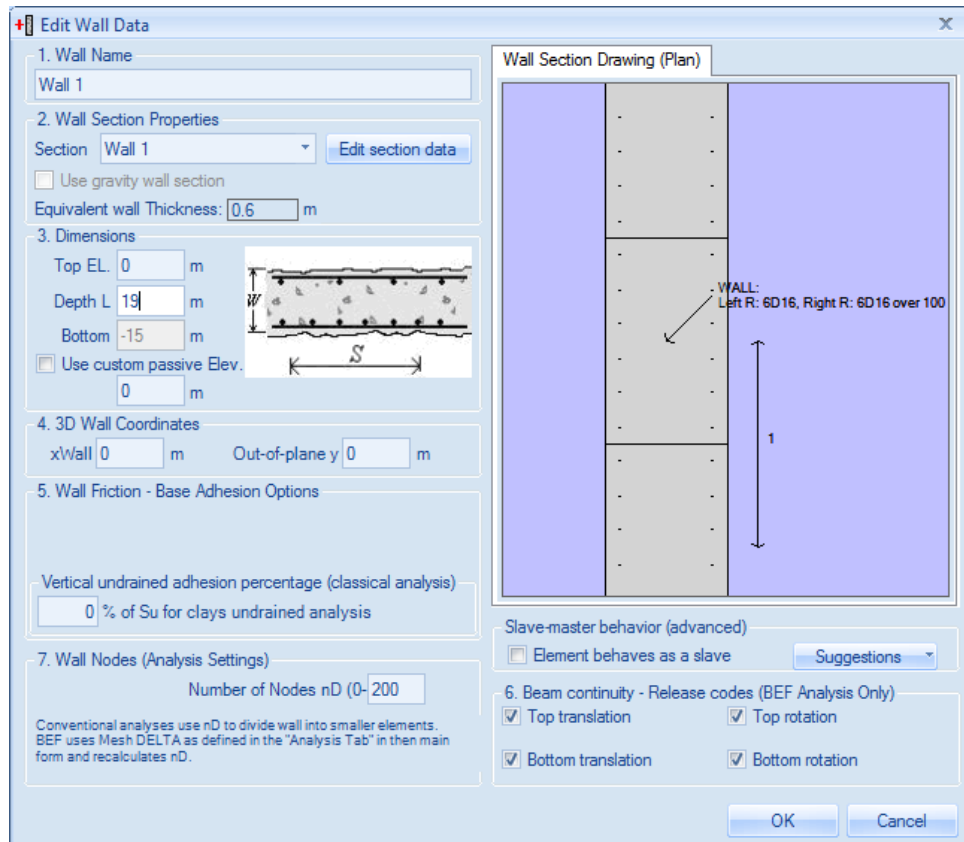
www.deepexcavation.com

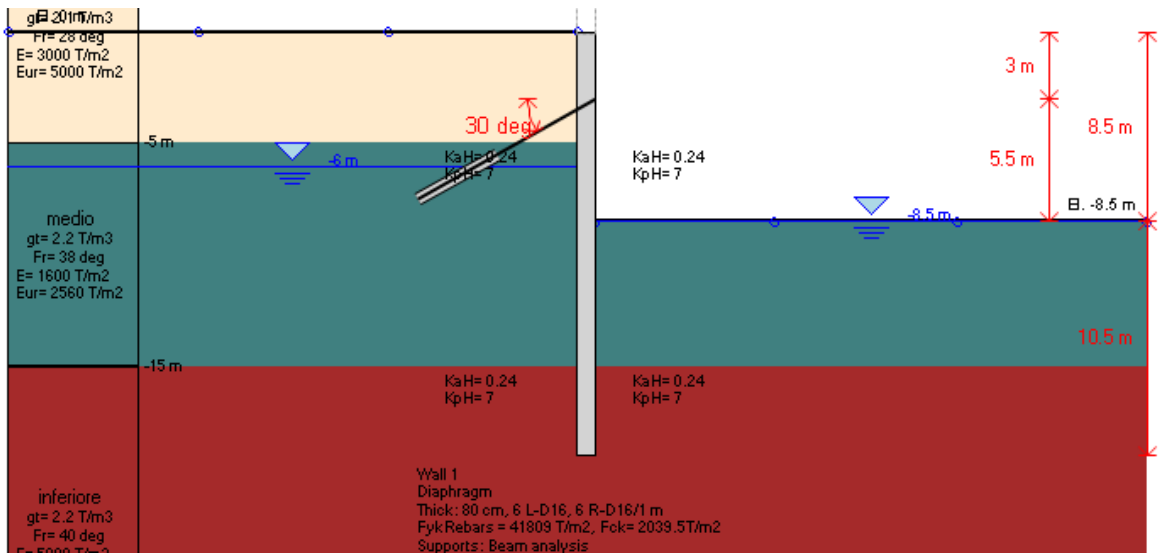
Object: BIRTH AND DEATH OF ELEMENTS IN DEEPCAV

- Model Birth_1

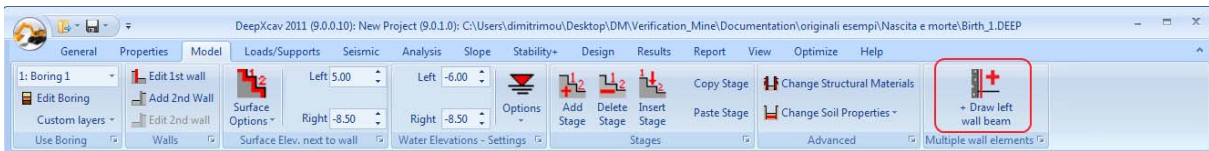
The following paragraphs describe the required steps to create model **Birth_1** where in the final stage, a piece of wall about 5 meters is activated to support the soil.

1. Define the diaphragm wall and all the previous stages, before the stage where the second piece of wall is inserted, until the end of stage 3:

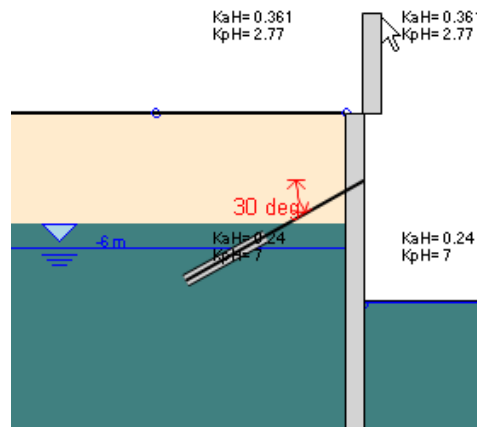




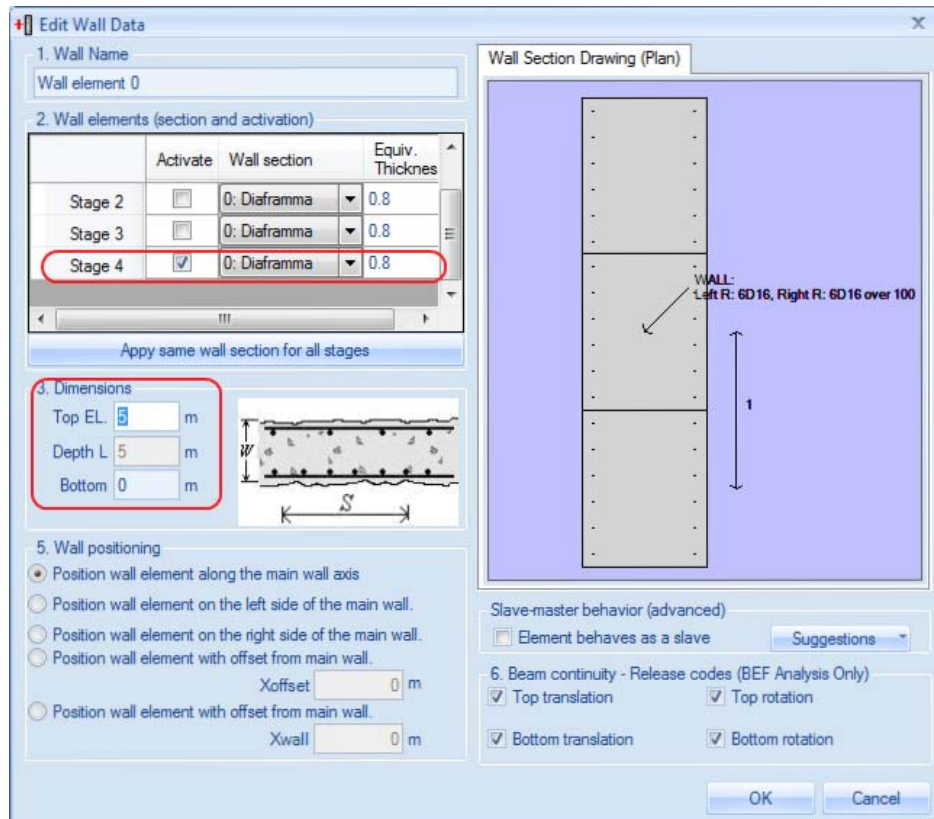
2. Create in the model a successive stage4 and push the button:



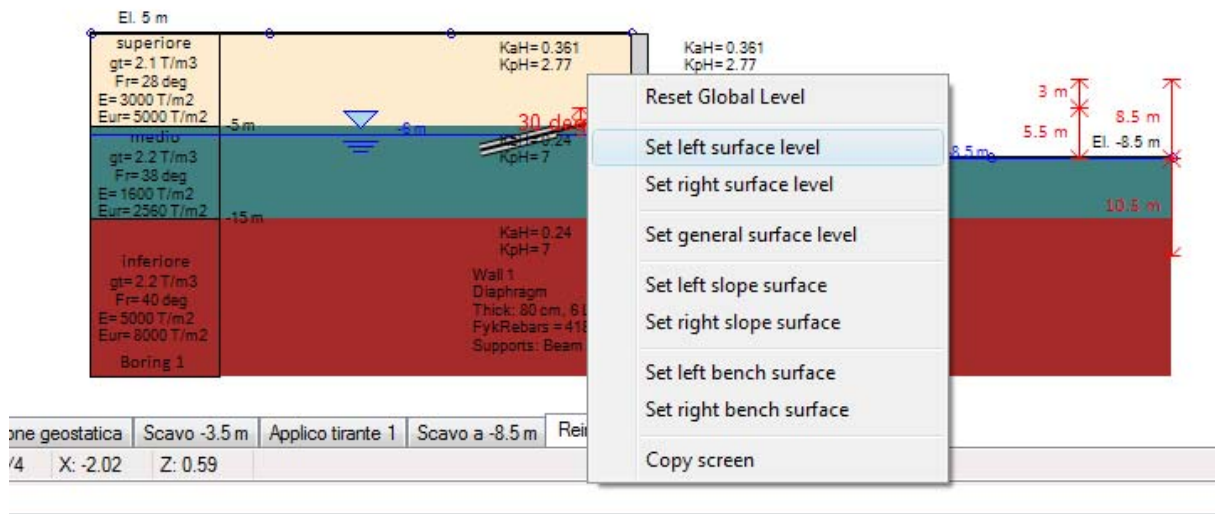
Draw in the supplementary wall section on the model by clicking first on the top point of insertion then near the top of the existing wall.



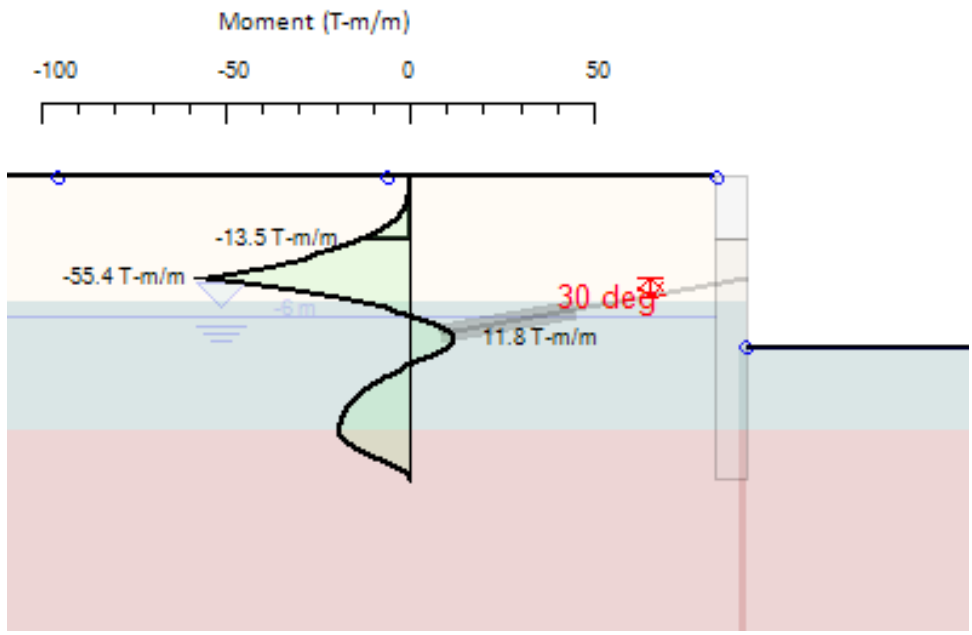
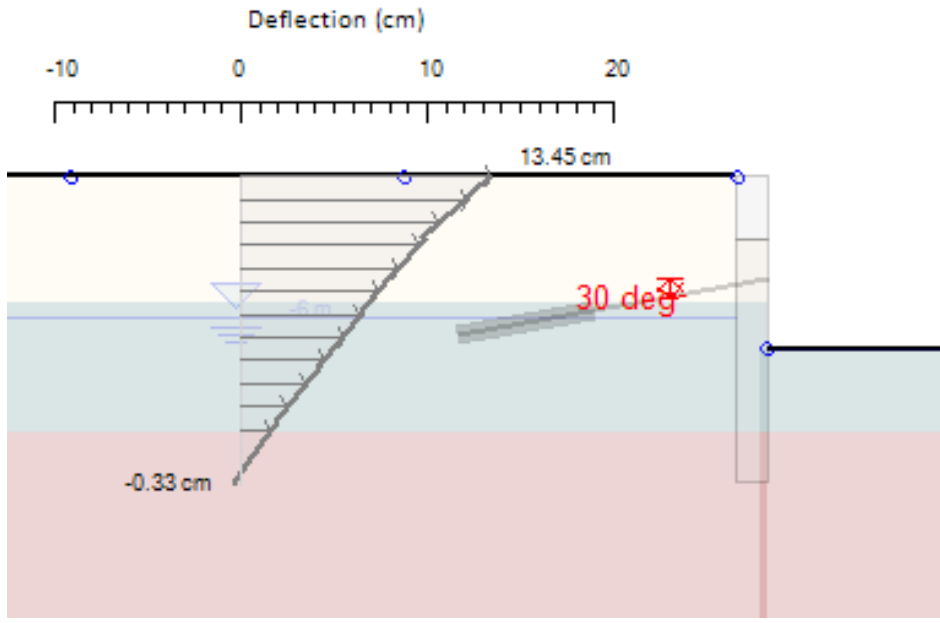
By double clicking the new wall beam you can change the how the wall beam is activated on each stage, and the new wall beam coordinates.



3. Modify the relevant surface elevation on the left to El. +5m..



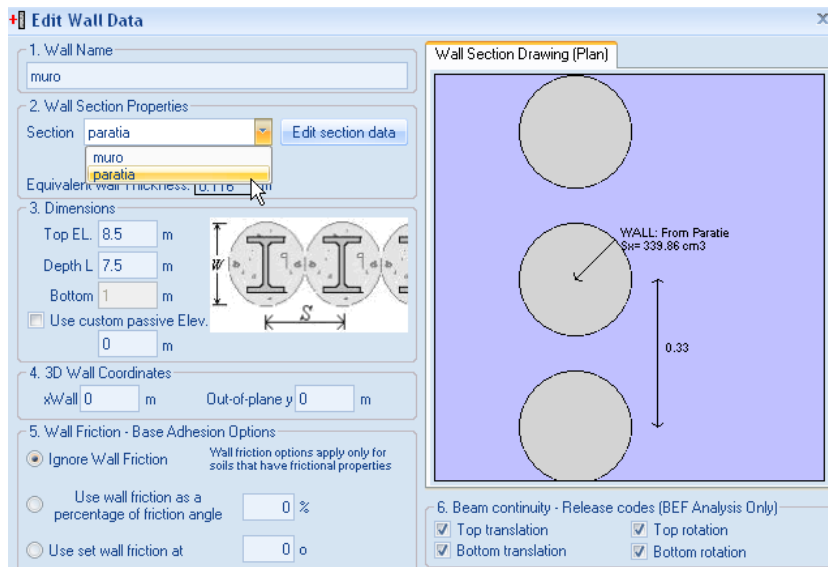
Developed from Ce.A.S. S.r.l, Italy and Deep Excavation LLC, U.S.A.



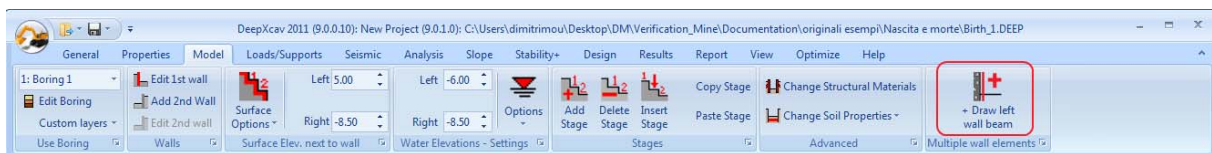
- **Model Birth_2**

The following model is constituted from a diaphragm wall where in the last stages a wall section with smaller stiffness is added.

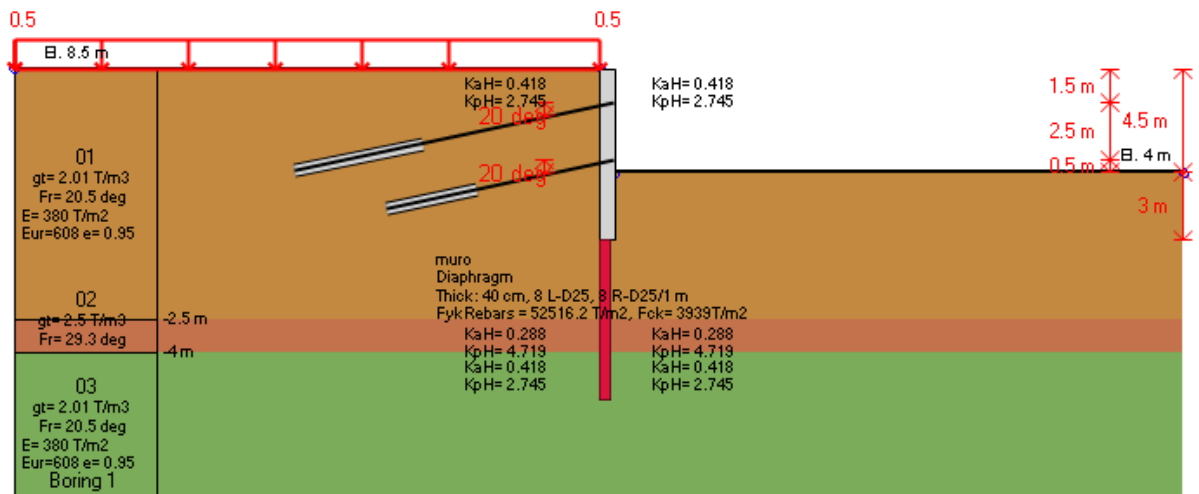
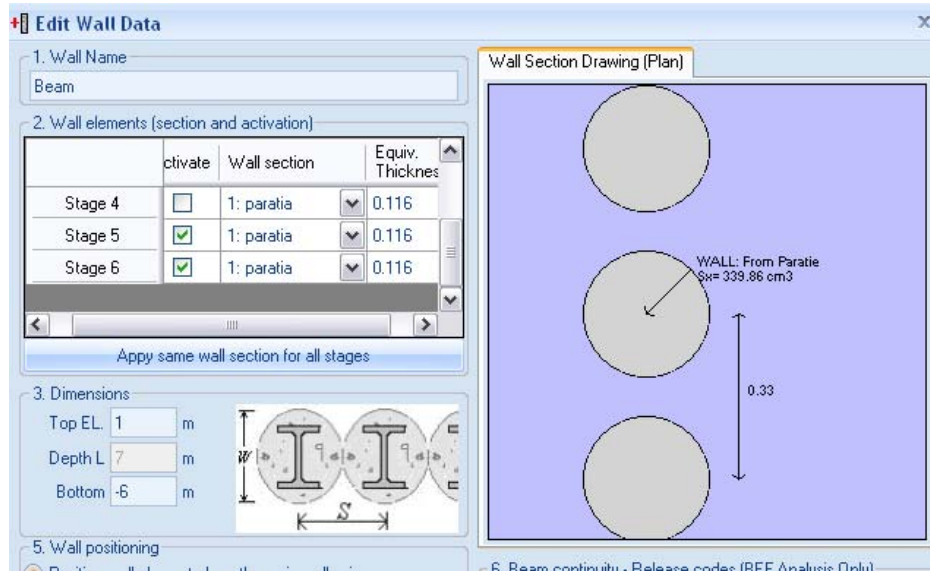
1. Define the wall section like below:



2. Insert the model and after that press the OK button:



3. Control the coordinates and the stage of construction by double clicking on the new wall beam.



scavo applicazione dei tiranti scavo Stage 4 Stage 5 Stage 6

Developed from Ce.A.S. S.r.l, Italy and Deep Excavation LLC, U.S.A.

